

TEL : +91-40-27898206 / 27892071
FAX : +91-40-27816171
E-MAIL : infohyd@balajiamines.com
unit2mktg@balajiamines.com
WEBSITE : www.balajiamines.com

Balaji



AMINES LTD.

Admn. Off :
3rd FLOOR, K.P.R. HOUSE, S.P. ROAD,
SECUNDERABAD - 500 003. (INDIA)

To,
The Secretary
Listing Department
National Stock Exchange of India Limited,
'Exchange Plaza', C-1, Block -G,
Bandra -Kurla Complex,
Bandra (E), MUMBAI - 400 051

Date: 20-05-2015

Dear Sir,

Sub: Outcome of Board Meeting - Reg.,
Ref: Scrip Code: BALAMINES

With reference to the above cited subject, we would like to inform that Directors in their Board Meeting held on 20-05-2015 have inter alia, transacted the following matters:

1. Approved the Audited Financial Results for the Year Ended and for the Quarter ended 31st March, 2015 recommended by the Audit committee to the Board of directors and the same is enclosed.
2. Recommended the payment of annual dividend of Re 1.20/- per equity share i.e. 60% on face value of Rs. 2/- per share and the same will be payable after it is approved by the shareholders at the ensuing Annual General Meeting.
3. The Key operating highlights of the Audited Annual Results for the year ended 31st March 2015 are as under:
 - a) Sales recorded at Rs. 604.86 Crs. during the financial year of 2014-15.
 - b) PAT recorded at Rs. 36.36 Crs. For the financial year 2014-15.
 - c) Recorded the Exports Sales of Rs. 138.55 Crs for the year ended 31st March 2015.
4. Noted the change in the particulars of name of Company Secretary as per the request to Mrs. Arati V. Bandi.
5. Noted The Code of Practice and Procedure for Fair Disclosure Of Unpublished Price Sensitive Information of the company to be effective immediately.

This is for your information and record.

FOR BALAJI AMINES LIMITED

G. Hemanth Reddy
G. HEMANTH REDDY
DIRECTOR

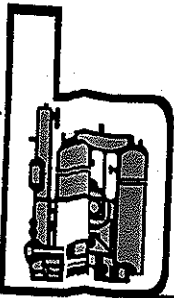
Encl:- As above

Regd. Office : "Balaji Towers", No. 9/1A/1, Hotgi Road, Aasara Chowk, Solapur - 413 003.

■ Fax : (0217) 2451521, Phones : (0217) 2451523, 2451524, E-mail : info@balajiamines.com

Unit II Works : Beside APSEB Sub Station II, IDA, Bollaram - 502 325, Jinnaram Mandal, Medak Dist. Telangana.

■ Phones : 08458-329660, Telefax : 08458-279240, E-mail : works2@balajiamines.com



TEL : +91-40-27898206 / 27892071
 FAX : +91-40-27816171
 E-MAIL : infohyd@balajiamines.com
 unit2mktg@balajiamines.com
 WEBSITE : www.balajiamines.com

Balaji



CIN : L24132MH1988PLCO49387

AMINES LTD.

Admn. Off :
 3rd FLOOR, K.P.R. HOUSE, S.P. ROAD,
 SECUNDERABAD - 500 003. (INDIA)

BALAJI AMINES LIMITED

(An ISO 9001:2008 Company)

Regd. Office : - "Balaji Towers", No. 9/1A/1, Hotgi Road, Aasara Chowk, Solapur - 413 224

CIN : L24132MH1988PLCO49387

PART I STANDALONE AUDITED FINANCIAL RESULTS FOR THE QUARTER AND YEAR ENDED MARCH 31, 2015

Rs. in Crores

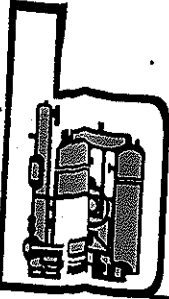
Particulars	3 months ended (31.03.2015)	Preceding 3 months ended (31.12.2014)	Corresponding 3 months ended (31.03.2014) in the previous year	Year to date figures for current period ended (31.03.2015)	Previous year ended (31.03.2014)
	(Audited)	(Unaudited)	(Audited)	(Audited)	(Audited)
1 Income from operations					
(a) Net sales/income from operations (Net of excise duty)	148.27	141.67	171.50	604.86	610.13
(b) Other operating income				0.00	0.00
Total income from operations (net)	148.27	141.67	171.50	604.86	610.13
2 Expenses					
(a) Cost of materials consumed	75.86	90.00	104.45	349.34	403.42
(b) Changes in inventories of finished goods & work-in-progress	4.04	-5.50	4.70	1.37	-22.45
(c) Employee benefits expense	7.05	6.16	6.27	24.46	20.78
(d) Depreciation	3.78	4.98	4.41	18.59	16.46
(e) Other expenses	32.62	30.68	34.95	127.33	117.36
Total expenses	123.15	126.32	154.78	521.09	535.57
3 Profit / (Loss) from operations before other income, finance costs and exceptional items (1-2)	25.12	15.35	16.72	83.77	74.56
4 Other income	1.24	0.52	0.54	3.39	2.60
5 Profit / (Loss) from ordinary activities before finance costs and exceptional items (3 + 4)	26.36	15.87	17.26	87.16	77.16
6 Finance costs	7.46	7.66	8.33	31.42	31.51

Regd. Office - "Balaji Towers", No. 9/1A/1, Hotgi Road, Aasara Chowk, Solapur - 413 003.

■ Fax - (0217) 2451521, Phones - (0217) 2451523, 2451524, E-mail - info@balajiamines.com

Unit II Works : Beside APSEB Sub Station II, IDA, Bollaram - 502 325, Jinnaram Mandal, Medak Dist. Telangana. Page 1 of 7

■ Phones : 08458-329660, Telefax : 08458-279240, E-mail : works2@balajiamines.com



TEL : +91-40-27898206 / 27892071
FAX : +91-40-27816171
E-MAIL : infohyd@balajiamines.com
unit2mktg@balajiamines.com
WEBSITE : www.balajiamines.com

Balaji



CIN : L24132MH1988PLCO49387

AMINES LTD.

Admn. Off :
3rd FLOOR, K.P.R. HOUSE, S.P. ROAD,
SECUNDERABAD - 500 003. (INDIA)

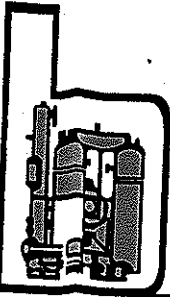
7	Profit / (Loss) from ordinary activities after finance costs but before exceptional items (5 - 6)	18.90	8.21	8.93	55.74	45.65
8	Exceptional items	0.00	0.00	0.00	0.00	0.00
9	Profit / (Loss) from ordinary activities before tax					
	(7 + 8)	18.90	8.21	8.93	55.74	45.65
10	Tax expense	7.13	2.02	-0.16	19.38	12.12
11	Net Profit / (Loss) from ordinary activities after tax (9 - 10)	11.77	6.19	9.09	36.36	33.53
12	Extraordinary items (net of tax expense)	0.00	0.00	0.00	0.00	0.00
13	Net Profit / (Loss) for the period (11 + 12)	11.77	6.19	9.09	36.36	33.53
14	Paid-up equity share capital (Face Value of each Share Rs. 2/-)	6.48	6.48	6.48	6.48	6.48
15	Reserve excluding Revaluation Reserves as per balance sheet of previous accounting year	231.24	195.76	166.00	231.24	166.00
16 i	Earnings per share (before extraordinary items) (of Rs 2/- each)					
	(a) Basic (Rupees)	3.63	1.91	2.81	11.22	10.35
	(b) Diluted (Rupees)	3.63	1.91	2.81	11.22	10.35
16 ii	Earnings per share (after extraordinary items) (of Rs 2/- each)					
	(a) Basic (Rupees)	3.63	1.91	2.81	11.22	10.35
	(b) Diluted (Rupees)	3.63	1.91	2.81	11.22	10.35

Regd. Office : "Balaji Towers", No. 9/1A/1, Hotgi Road, Aasara Chowk, Solapur - 413 003.

■ Fax : (0217) 2451521, Phones : (0217) 2451523, 2451524, E-mail : info@balajiamines.com

Unit II Works : Beside APSEB Sub Station II, IDA, Bollaram - 502 325, Jinnaram Mandal, Medak Dist. Telangana.

■ Phones : 08458-329660, Telefax : 08458-279240, E-mail : works2@balajiamines.com



TEL : +91-40-27898206 / 27892071
 FAX : +91-40-27816171
 E-MAIL : infohyd@balajiamines.com
 unit2mktg@balajiamines.com
 WEBSITE : www.balajiamines.com

Balaji



CIN : L24132MH1988PLCO49387

AMINES LTD.

Admn. Off :
 3rd FLOOR, K.P.R. HOUSE, S.P. ROAD,
 SECUNDERABAD - 500 003. (INDIA)

PART II SELECTED INFORMATION FOR THE YEAR AND QUARTER ENDED 31ST MARCH 2015

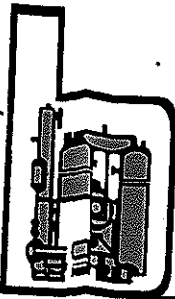
Particulars		3 months ended (31.03.2015)	Preceding 3 months ended (31.12.2014)	Corresponding 3 months ended in the previous year (31.03.2014)	Year to date figures for current period Ended (31.03.2015)	Previous year ended (31.03.2014)
A	PARTICULARS OF SHAREHOLDING					
1	Public shareholding					
	- Number of shares	14764664	14794918	14794918	14764664	14794918
	- Percentage of shareholding	45.56	45.66	45.66	45.56	45.66
2	Promoters and Promoter Group Shareholding **	17624082	17606082	17606082	17624082	17606082
a)	Pledged / Encumbered					
	Number of shares	6732000	6732000	6732000	6732000	6732000
	Percentage of shares (as a % of the total shareholding of promoter and promoter group)	38.20	38.24	38.24	38.20	38.24
	Percentage of shares (as a % of the total share capital of the company)	20.78	20.78	20.78	20.78	20.78
b)	Non - encumbered					
	Number of shares	10892082	10874082	10874082	10892082	10874082
	Percentage of shares (as a % of the total shareholding of the Promoter and Promoter group)	61.80	61.76	61.76	61.80	61.76
	Percentage of shares (as a % of the total share capital of the company)	33.61	33.56	33.56	33.61	33.56
Particulars			3 months ended 31.03.2015			
B	INVESTOR COMPLAINTS					
	Pending at the beginning of the quarter	Nil				
	Received during the quarter	Nil				
	Disposed of during the quarter	Nil				
	Remaining unresolved at the end of the quarter	Nil				

Regd. Office : "Balaji Towers", No. 9/1A/1, Hotgi Road, Aasara Chowk, Solapur - 413 003.

■ Fax : (0217) 2451521, Phones : (0217) 2451523, 2451524, E-mail : info@balajiamines.com

Unit II Works : Beside APSEB Sub Station II, IDA, Bollaram - 502 325, Jinnaram Mandal, Medak Dist. Telangana

■ Phones : 08458-329660, Telefax : 08458-279240, E-mail : works2@balajiamines.com



TEL : +91-40-27898206 / 27892071
 FAX : +91-40-27816171
 E-MAIL : infohyd@balajiamines.com
 unit2mktg@balajiamines.com
 WEBSITE : www.balajiamines.com

Balaji



CIN : L24132MH1988PLCO49387

AMINES LTD.

Admn. Off :
 3rd FLOOR, K.P.R. HOUSE, S.P. ROAD,
 SECUNDERABAD - 500 003. (INDIA)

Segment Information

Rs. in Crores

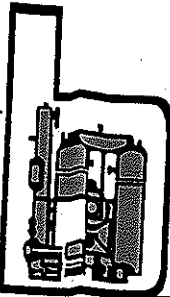
Sl.No.	Particulars	3 months ended (31.03.2015) (Audited)	Preceding 3 months ended (31.12.2014) (Unaudited)	3 months ended (31.03.2014) (Audited)	Year to date figures for current period ended (31.03.2015) (Audited)	Previous Financial Year Ended 31.03.2014 (Audited)
1	Segment Revenue					
	Amines Division	144.67	138.88	169.11	593.57	606.18
	Hotel Division	3.65	2.87	2.42	11.48	4.01
	Sub Total :	148.32	141.75	171.53	605.05	610.19
	Less: Inter-segment revenue	0.05	0.08	0.03	0.19	0.06
	Net revenue from operations	148.27	141.67	171.50	604.86	610.13
2	Segment Results before Depreciation, Interest & Tax					
	Amines Division	28.96	20.19	21.57	103.80	93.43
	Hotel Division	1.18	0.66	0.10	1.95	0.18
	Total :	30.14	20.85	21.67	105.75	93.61
3	Depreciation					
	Amines Division	0.43	3.92	3.32	12.09	14.74
	Hotel Division	3.35	1.06	1.09	6.50	1.72
	Total :	3.78	4.98	4.41	18.59	16.46
4	Interest					
	Amines Division	6.63	6.78	7.34	27.82	29.85
	Hotel Division	0.83	0.88	0.99	3.60	1.66
	Total :	7.46	7.66	8.33	31.42	31.51
5	Segment Profit/Loss (-) before tax					
	Amines Division	21.90	9.48	10.91	63.89	48.84
	Hotel Division	-3.00	-1.27	-1.98	-8.15	-3.20
	Total :	18.90	8.21	8.93	55.74	45.64
6	Tax Expenses					
	Amines Division	6.14	0.64	-0.16	13.41	12.12
	Hotel Division	0.99	1.38	0.00	5.97	0.00
	Total :	11.77	6.19	9.09	36.36	33.52
7	Profit/Loss (-) after tax					
8	Segment Assets					
	Amines Division	502.89	537.94	516.22	502.89	516.22
	Hotel Division	100.39	103.86	105.13	100.39	105.13
	Total :	603.28	641.80	621.35	603.28	621.35
9	Segment Liabilities					
	Amines Division	329.65	367.42	385.99	329.65	385.99
	Hotel Division	35.90	46.23	33.12	35.90	33.12
	Total :	365.55	413.65	419.11	365.55	419.11
10	Segment Assets acquired during the year					
	Amines Division	0.71	0.80	5.79	6.25	5.79
	Hotel Division	0.02	0.38	102.03	1.10	102.03
	Total :	0.73	1.18	107.82	7.35	107.82
11	Capital Work in Progress					
	Amines Division	3.15	8.55	8.12	3.15	8.12
	Total :	3.15	8.55	8.12	3.15	8.12

Regd. Office : "Balaji Towers", No. 9/1A/1, Hotgi Road, Aasara Chowk, Solapur - 413 003.

Fax : (0217) 2451521, Phones : (0217) 2451523, 2451524, E-mail : info@balajiamines.com

Unit II Works : Beside APSEB Sub Station II, IDA, Bollaram - 502 325, Jinnaram Mandal, Medak Dist. Telangana.

Phones : 08458-329660, Telefax : 08458-279240, E-mail : works2@balajiamines.com



TEL : +91-40-27898206 / 27892071
 FAX : +91-40-27816171
 E-MAIL : infohyd@balajiamines.com
 unit2mktg@balajiamines.com
 WEBSITE : www.balajiamines.com

Balaji



CIN : L24132MH1988PLCO49387

AMINES LTD.

Admn. Off :
 3rd FLOOR, K.P.R. HOUSE, S.P. ROAD,
 SECUNDERABAD - 500 003. (INDIA)

CONSOLIDATED AUDITED FINANCIAL RESULTS FOR THE YEAR ENDED MARCH 31, 2015

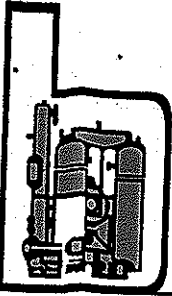
Rs. In Crores

Sl.No.	Particulars	Year to date figure for current period ended (31.03.2015) (Audited)
1	Income from operations	
	(a) Net sales/income from operations (Net of excise duty)	618.70
	(b) Other operating income	0.00
	Total income from operations (net)	618.70
2	Expenses	
	(a) Cost of materials consumed	356.67
	(b) Changes in inventories of finished goods & work-in-progress	2.88
	(c) Employee benefits expense	26.96
	(d) Depreciation	20.08
	(e) Other expenses	130.42
	Total expenses	537.00
3	Profit / (Loss) from operations before other income, finance costs and exceptional items (1-2)	81.69
4	Other income	4.26
5	Profit / (Loss) from ordinary activities before finance costs and exceptional items (3 + 4)	85.95
6	Finance costs	34.88
7	Profit / (Loss) from ordinary activities after finance costs but before exceptional items (5 - 6)	51.07
8	Exceptional items	0.00
9	Profit / (Loss) from ordinary activities before tax (7 + 8)	51.07
10	Tax expense	17.87
11	Net Profit / (Loss) from ordinary activities after tax (9 - 10)	33.20
12	Extraordinary items (net of tax expense)	0.00
13	Net Profit / (Loss) after taxes but before share of profit / (loss) of associates and minority interest for the period (11+12)	33.20
14	Share of Profit / (Loss) of associates	-2.08
15	Minority Interest	-1.07
16	Net Profit / (Loss) for the period	34.27
17	Paid up equity share capital (Face Value of each Share Rs. 2/-)	6.48

Registered Office: "Balaji Towers", No. 9/1A/1, Hotgi Road, Aasara Chowk, Solapur - 413 003
 Fax: (0217) 2451521, Phones: (0217) 2451523, 2451524, E-mail: info@balajiamines.com

Unit II Works: Beside APSEB Sub Station II, IDA, Bollaram - 502 325, Jinnaram Mandal, Medak Dist. Telangana. Page 6 of 7

Phones: 08458-329660, Telefax: 08458-279240, E-mail: works2@balajiamines.com



TEL : +91-40-27898206 / 27892071
FAX : +91-40-27816171
E-MAIL : infohyd@balajiamines.com
unit2mktg@balajiamines.com
WEBSITE : www.balajiamines.com

Balaji



CIN : L24132MH1988PLCO49387

AMINES LTD.

Admn. Off :
3rd FLOOR, K.P.R. HOUSE, S.P. ROAD,
SECUNDERABAD - 500 003. (INDIA)

18 i	Earnings per share (before extraordinary items)	
	(of Rs 2/- each)	
	(a) Basic Rupees (Rupees)	10.58
	(b) Diluted Rupees (Rupees)	10.58
18 ii	Earnings per share (after extraordinary items) (of Rs 2/- each)	
	(a) Basic Rupees (Rupees)	10.58
	(b) Diluted Rupees (Rupees)	10.58

Notes :

1. The above audited results have been reviewed by the audit committee and taken on record by the Board of Directors at their meeting held on 20-05-2015.
2. No Consolidation was carried in the previous year 31/03/2014
3. Corresponding figures in previous year have been regrouped wherever considered necessary.
4. Segment wise reporting as applicable under AS-17 for the quarter ended 31st March 2015, given separately.
*The Shares are pledged in favour of Banks to Secure various credit facilities to the company

Date: 20-05-2015

Place : Secunderabad

By order of Board
for Balaji Amines Limited

A Prathap Reddy
Chairman & Managing Director

Regd. Office : "Balaji Towers", No. 9/1A/1, Hotgi Road, Aasara Chowk, Solapur - 413 003.

■ Fax : (0217) 2451521, Phones : (0217) 2451523, 2451524, E-mail : info@balajiamines.com

Unit II Works : Beside APSEB Sub Station II, IDA, Bollaram - 502 325, Jinnaram Mandal, Medak Dist. Telangana

■ Phones : 08458-329660, Telefax : 08458-279240, E-mail : works2@balajiamines.com