

Balaji



CIN : L24132MH1988PLC049387

TEL : +91-40-27898206 / 27892071
 FAX : +91-40-27816171
 E-MAIL : infohyd@balajiamines.com
 unit2mktg@balajiamines.com
 WEBSITE : www.balajiamines.com

AMINES LTD.

Admn. Off :
 3rd FLOOR, K.P.R. HOUSE, S.P. ROAD,
 SECUNDERABAD - 500 003. (INDIA)

BALAJI AMINES LIMITED
 (An ISO 9001:2008 Company)
 CIN : L24132MH1988PLC049387

Regd. Office : - "Balaji Towers", No. 9/1A/1, Hotgi Road, Aasara Chowk, Solapur - 413 224

UNAUDITED FINANCIAL RESULTS FOR THE QUARTER ENDED JUNE 30, 2015

PART I

Rs. in Crores

Particulars	3 months ended (30.06.2015)	Preceding 3 months ended (31.03.2015)	Corresponding 3 months ended (30.06.2014) in the previous year	Year to date figures for the previous year ended (31.03.2015)
	(Unaudited)	(Audited)	(Unaudited)	(Audited)
1 Income from operations				
(a) Net sales/income from operations (Net of excise duty)	159.64	148.27	164.47	604.86
(b) Other operating income	0.00	0.00	0.00	0.00
Total income from operations (net)	159.64	148.27	164.47	604.86
2 Expenses				
(a) Cost of materials consumed	82.48	75.66	103.28	349.34
(b) Changes in inventories of finished goods & work-in-progress	12.33	4.04	-2.08	1.37
(c) Employee benefits expense	6.55	7.05	5.71	24.46
(d) Depreciation	4.39	3.78	4.90	18.59
(e) Other expenses	29.29	32.62	32.60	127.33
Total expenses	135.04	123.15	144.41	521.09
3 Profit / (Loss) from operations before other income, finance costs and exceptional items (1-2)	24.59	25.12	20.06	83.77
4 Other income	0.68	1.24	0.78	3.39
5 Profit / (Loss) from ordinary activities before finance costs and exceptional items (3 + 4)	25.27	26.36	20.84	87.16
6 Finance costs	5.73	7.46	8.36	31.42

Regd. Office : "Balaji Towers", No. 9/1A/1, Hotgi Road, Aasara Chowk, Solapur - 413 003

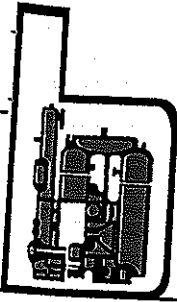
■ Fax : (0217) 2451521, Phones : (0217) 2451523, 2451524, E-mail : info@balajiamines.com

Unit II Works : Beside APSEB Sub Station II, IDA, Bellaram - 502 325, Jinnaram Mandal, Medak Dist. Telangana

■ Phones : 08458-329660, Telefax : 08458-279240, E-mail : works2@balajiamines.com

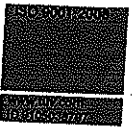


Page 1 of 5



TEL : +91-40-27898206 / 27892071
FAX : +91-40-27816171
E-MAIL : infohyd@balajiamines.com
unit2mktg@balajiamines.com
WEBSITE : www.balajiamines.com

Balaji



CIN : L24132MH1988PLCO49387

AMINES LTD.

Admn. Off :
3rd FLOOR, K.P.R. HOUSE, S.P. ROAD,
SECUNDERABAD - 500 003. (INDIA)

7	Profit / (Loss) from ordinary activities after finance costs but before exceptional items (5 - 6)				
		19.54	18.90	12.48	55.74
8	Exceptional items	0.00	0.00	0.00	0.00
9	Profit / (Loss) from ordinary activities before tax (7 + 8)				
		19.54	18.90	12.48	55.74
10	Tax expense	6.72	7.13	3.17	19.38
11	Net Profit / (Loss) from ordinary activities after tax (9 - 10)				
		12.82	11.77	9.31	36.36
12	Extraordinary items (net of tax expense)	0.00	0.00	0.00	0.00
13	Net Profit / (Loss) for the period (11 + 12)				
		12.82	11.77	9.31	36.36
14	Paid-up equity share capital (Face Value of each Share Rs. 2/-)	6.48	6.48	6.48	6.48
15	Reserve excluding Revaluation Reserves as per balance sheet of previous accounting year	231.24	195.76	195.76	195.76
16 i	Earnings per share (before extraordinary items) (of Rs 2/- each) (not annualised):				
	(a) Basic	3.96	3.63	2.87	11.22
	(b) Diluted	3.96	3.63	2.87	11.22
16 ii	Earnings per share (after extraordinary items) (of Rs 2/- each) (not annualised):				
	(a) Basic	3.96	3.63	2.87	11.22
	(b) Diluted	3.96	3.63	2.87	11.22

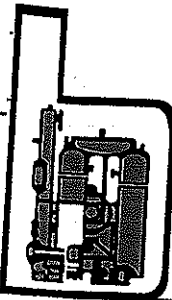


Regd. Office : "Balaji Towers", No. 9/1A/1, Hotgi Road, Aasara Chowk, Solapur - 413 003.

Fax : (0217) 2451521, Phones : (0217) 2451523, 2451524, E-mail : info@balajiamines.com

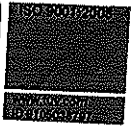
Unit II Works : Beside APSEB Sub Station II, IDA, Bollaram - 502 325, Jinnaram Mandal, Medak Dist. Telangana.

Phones : 08458-329660, Telefax : 08458-279240, E-mail : works2@balajiamines.com



TEL : +91-40-27898206 / 27892071
 FAX : +91-40-27816171
 E-MAIL : infohyd@balajiamines.com
 unit2mktg@balajiamines.com
 WEBSITE : www.balajiamines.com

Balaji



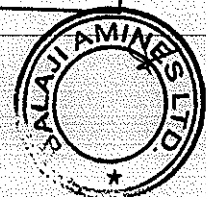
CIN : L24132MH1988PLCO49387

AMINES LTD.

Admn. Off :
 3rd FLOOR, K.P.R. HOUSE, S.P. ROAD,
 SECUNDERABAD - 500 003. (INDIA)

PART II SELECTED INFORMATION FOR THE QUARTER ENDED 30TH JUNE 2014

Particulars		3 months ended (30.06.2015)	Preceding 3 months ended (31.03.2015)	Corresponding 3 months ended in the previous year (30.06.2014)	Year to date figures for Previous year Ended (31.03.2015)
A	PARTICULARS OF SHAREHOLDING				
1	Public shareholding				
	- Number of shares	14775013	14764664	14764664	14764664
	- Percentage of shareholding	45.57	45.56	45.56	45.56
2	Promoters and Promoter Group Shareholding **	17625987	17624082	17624082	17624082
	a) Pledged / Encumbered				
	Number of shares	6732000	6732000	6732000	6732000
	Percentage of shares (as a % of the total shareholding of promoter and promoter group)	38.19	38.20	38.20	38.20
	Percentage of shares (as a % of the total share capital of the company)	20.78	20.78	20.78	20.78
	b) Non - encumbered				
	Number of shares	10893987	10892082	10892082	10892082
	Percentage of shares (as a % of the total shareholding of the Promoter and Promoter group)	61.80	61.80	61.80	61.80
	Percentage of shares (as a % of the total share capital of the company)	33.62	33.61	33.61	33.61
B	INVESTOR COMPLAINTS	3 months ended 30.06.2015			
	Pending at the beginning of the quarter	Nil			
	Received during the quarter	Nil			
	Disposed of during the quarter	Nil			
	Remaining unresolved at the end of the quarter	Nil			

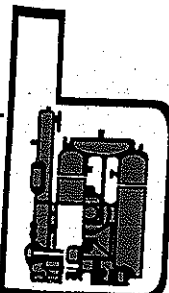


Regd. Office : "Balaji Towers", No. 9/1A/1, Hotgi Road, Aasara Chowk, Solapur - 413 003.

Fax : (0217) 2451521, Phones : (0217) 2451523, 2451524, E-mail : info@balajiamines.com

Unit II Works : Beside APSEB Sub Station II, IDA, Bollaram - 502 325, Jinnaram Mandal, Medak Dist. Telangana.

Phones : 08458-329660, Telefax : 08458-279240, E-mail : works2@balajiamines.com



TEL : +91-40-27898206 / 27892071
 FAX : +91-40-27816171
 E-MAIL : infohyd@balajiamines.com
 unit2mktg@balajiamines.com
 WEBSITE : www.balajiamines.com

Balaji



CIN : L24132MH1988PLCO49387

AMINES LTD.

Admn. Off :
 3rd FLOOR, K.P.R. HOUSE, S.P. ROAD,
 SECUNDERABAD - 500 003. (INDIA)

SEGMENT REPORTING FOR THE QUARTER ENDED JUNE 30,2015

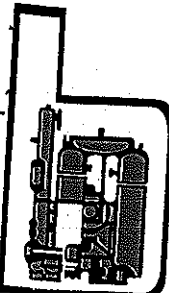
Sl.No.	Particulars	3 months ended (30.06.2015)	Preceding 3 months ended (31.03.2015)	Corresponding 3 months ended (30.06.2014) in the previous year	Year to date figures for current period ended (31.03.2015)
		(Unaudited)	(Audited)	(Unaudited)	(Audited)
1	Segment Revenue				
	Amines Division				
	Hotel Division	156.28	144.67	161.99	593.57
	Sub Total :	3.38	3.65	2.52	11.48
	Less: Inter-segment revenue	159.66	148.32	164.51	605.05
	Net revenue from operations	0.02	0.05	0.04	0.19
2	Segment Results before Depreciation, Interest & Tax	159.64	148.27	164.47	604.86
	Amines Division				
	Hotel Division	28.94	28.96	25.78	103.80
	Total :	0.72	1.18	-0.04	1.95
3	Depreciation	29.66	30.14	25.74	105.75
	Amines Division				
	Hotel Division	2.86	0.43	3.86	12.09
	Total :	1.53	3.35	1.04	6.50
4	Interest	4.39	3.78	4.90	18.59
	Amines Division				
	Hotel Division	5.04	6.63	7.40	27.82
	Total :	0.69	0.83	0.96	3.60
5	Segment Profit/Loss (-) before tax	5.73	7.46	8.36	31.42
	Amines Division				
	Hotel Division	21.04	21.90	14.52	63.89
	Total :	-1.50	-3.00	-2.04	-8.15
6	Tax Expenses	19.54	18.90	12.48	55.74
	Amines Division				
	Hotel Division	6.34	6.14	3.38	13.41
	Total :	0.39	0.99	-0.21	5.97
7	Profit/Loss (-) after tax	12.81	11.77	9.31	36.36
8	Segment Assets				
	Amines Division				
	Hotel Division	481.66	502.89	534.50	502.89
	Total :	98.88	100.39	104.86	100.39
	Total :	580.54	603.28	639.36	603.28

Regd. Office : "Balaji Towers", No. 9/1A/1, Hotgi Road, Aasara Chowk, Solapur - 413 003.

Fax : (0217) 2451521, Phones : (0217) 2451523, 2451524, E-mail : info@balajiamines.com
 Unit II Works : Beside APSEB Sub Station II, IDA, Bollaram - 502 325, Jinnaram Mandal, Medak Dist. Telangana

Phones : 08458-329660, Telefax : 08458-279240, E-mail : works2@balajiamines.com





Balaji



CIN : L24132MH1988PLCO49387

TEL : +91-40-27898206 / 27892071
FAX : +91-40-27816171
E-MAIL : infohyd@balajiamines.com
unit2mktg@balajiamines.com
WEBSITE : www.balajiamines.com

AMINES LTD.

Admn. Offi.:
3rd FLOOR, K.P.R. HOUSE, S.P. ROAD,
SECUNDERABAD - 500 003. (INDIA)

9	Segment Liabilities				
	Amines Division				
	Hotel Division	300.62	329.65	392.43	329.65
		33.49	35.90	34.59	35.90
	Total :	334.11	365.55	427.02	365.55
10	Segment Assets acquired during the year				
	Amines Division				
	Hotel Division	0.27	0.71	4.34	6.25
		0.00	0.02	0.40	1.10
	Total :	0.27	0.73	4.74	7.35
11	Capital Work in Progress				
	Amines Division				
		4.11	3.15	8.21	3.15
	Total :	4.11	3.15	8.21	3.15

Notes:

1. The above unaudited results have reviewed by the audit committee and taken on record by the Board of Directors at their meeting held on 30-07-2015.
2. The Limited Review by the Statutory Auditors for the quarter as required under clause 41 of the Listing Agreement has been completed and the related Report is being forwarded to stock Exchanges. This report does not have any impact on the above Results and Notes which needs to be explained.
3. Corresponding figures in previous year have been regrouped wherever considered necessary.
4. Segment wise reporting as applicable under AS-17 for the quarter ended 30th June 2015, given separately.

*The Shares are pledged in favour of Banks to Secure various credit facilities to the company

Date: 30/07/2015
Place : Secunderabad

By order of Board
For Balaji Amines Limited

A. Prabhakar Reddy
Chairman & Managing Director

Regd. Office : "Balaji Towers", No. 9/1A/1, Hotgi Road, Aasara Chowk, Solapur - 413 003.

■ Fax : (0217) 2451521, Phones : (0217) 2451523, 2451524, E-mail : info@balajiamines.com Page 5 of 5

Unit II Works : Beside APSEB Sub Station II, IDA, Bollaram - 502 325, Jinnaram Mandal, Medak Dist. Telangana.

■ Phones : 08458-329660, Telefax : 08458-279240, E-mail : works2@balajiamines.com